



# How to Create a Dynamic Dashboard in Smartsheet

Transform your data into actionable insights with automated dashboards that update in real-time.

 **by Scholar Solutions**



# Why Dynamic Dashboards Matter



## Real-Time Updates

Dashboards automatically refresh with latest data changes. No manual updates required.



## Enhanced Visibility

Visual charts make trends and patterns immediately apparent. Stakeholders see what matters most.



## Quick Decision-Making

Instant access to current metrics accelerates response times. Critical insights drive faster actions.





# Step 1: Define Your Objectives

## Project Tracking

Monitor task completion rates, milestone progress, and timeline adherence across multiple projects simultaneously.

## Financial Performance

Track budget utilization, revenue trends, and cost analysis with automated calculations and variance reporting.

## Resource Allocation

Visualize team capacity, workload distribution, and resource availability to optimize assignments and planning.

# Step 2: Structure Your Data Source



## Column Headers

Use clear, descriptive names for all data columns. Consistent naming enables accurate widget connections.



## Data Types

Set appropriate column types for dates, numbers, and text. Proper formatting ensures accurate calculations.



## Data Quality

Remove duplicates and validate entries regularly. Clean data produces reliable dashboard insights.





# Step 3: Create Reports and Formula Sheets

## Build Reports

Create filtered views of your data using Smartsheet's report builder. Reports automatically update when source data changes.

- Filter by project status
- Group by team member
- Sort by priority level

## Formula Sheets

Develop calculation sheets with cross-sheet references for complex metrics. Use SUMIF, COUNTIF, and INDEX formulas.

- Budget variance calculations
- Completion percentages
- Resource utilization rates



# Step 4: Build Your Dashboard



## Add Chart Widgets

Insert bar, line, or pie charts linked to your reports and data sources.



## Create Metric Widgets

Display key numbers with threshold indicators and conditional formatting rules.



## Include Report Widgets

Embed filtered report views to show detailed data alongside visual summaries.



# Step 5: Test and Share

## Verify Data Accuracy

Test all widget connections and validate calculations. Ensure metrics reflect actual source data correctly.

## Configure Sharing Settings

Set appropriate permissions for different stakeholder groups. Control who can view versus edit dashboard elements.

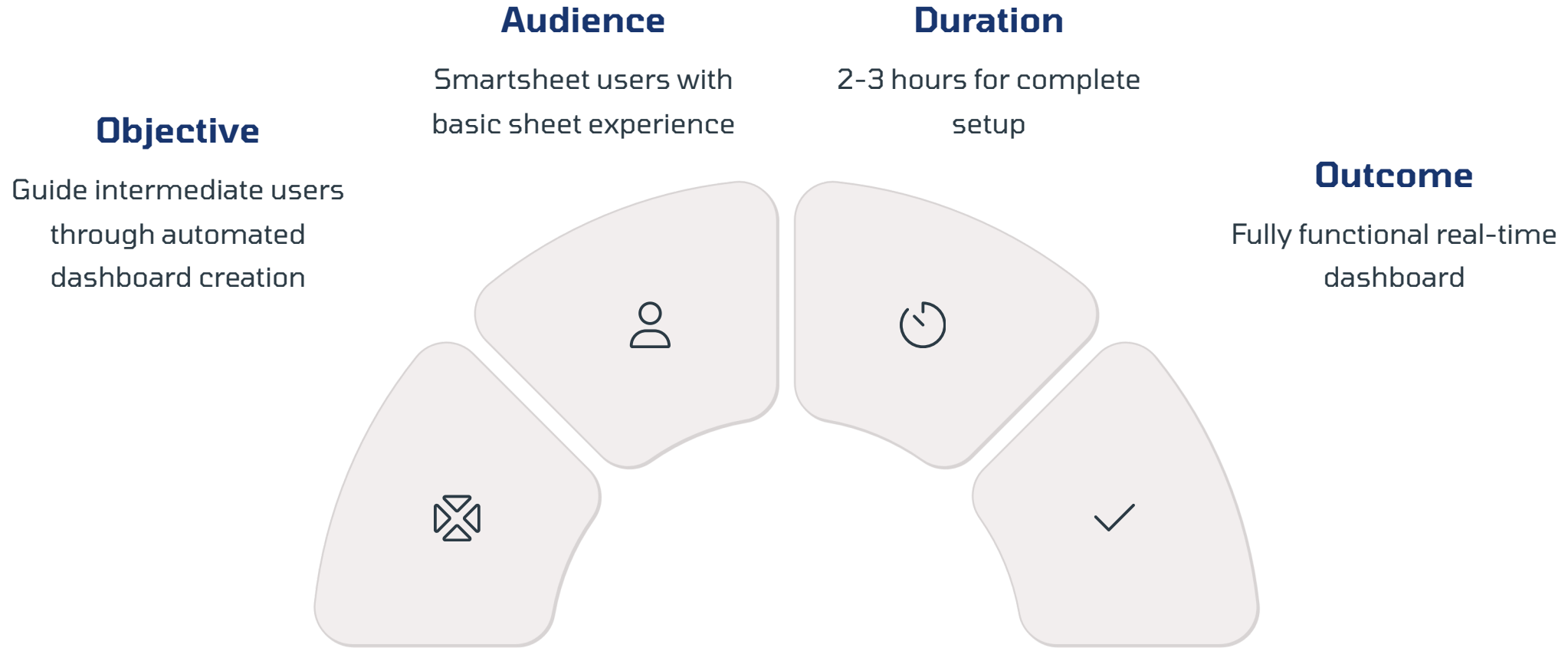
## Distribute Dashboard Links

Share secure URLs with relevant team members. Enable email notifications for important data changes.





# Creating a Dynamic Smartsheet Dashboard





# Materials and Prerequisites



## Smartsheet Access

Active Business or Enterprise plan for dashboard functionality



## Structured Data

Clean sheets with consistent column formatting and data types



## Stakeholder Input

Clear requirements from dashboard viewers and decision makers



## Admin Rights

Ability to create reports and share with external users



# Step-by-Step Instructions

1

## Define Objectives

Identify key metrics and stakeholder requirements

2

## Organize Data

Structure sheets with proper column types

3

## Create Reports

Build filtered views and formula calculations

4

## Add Widgets

Insert charts, metrics, and report displays

5

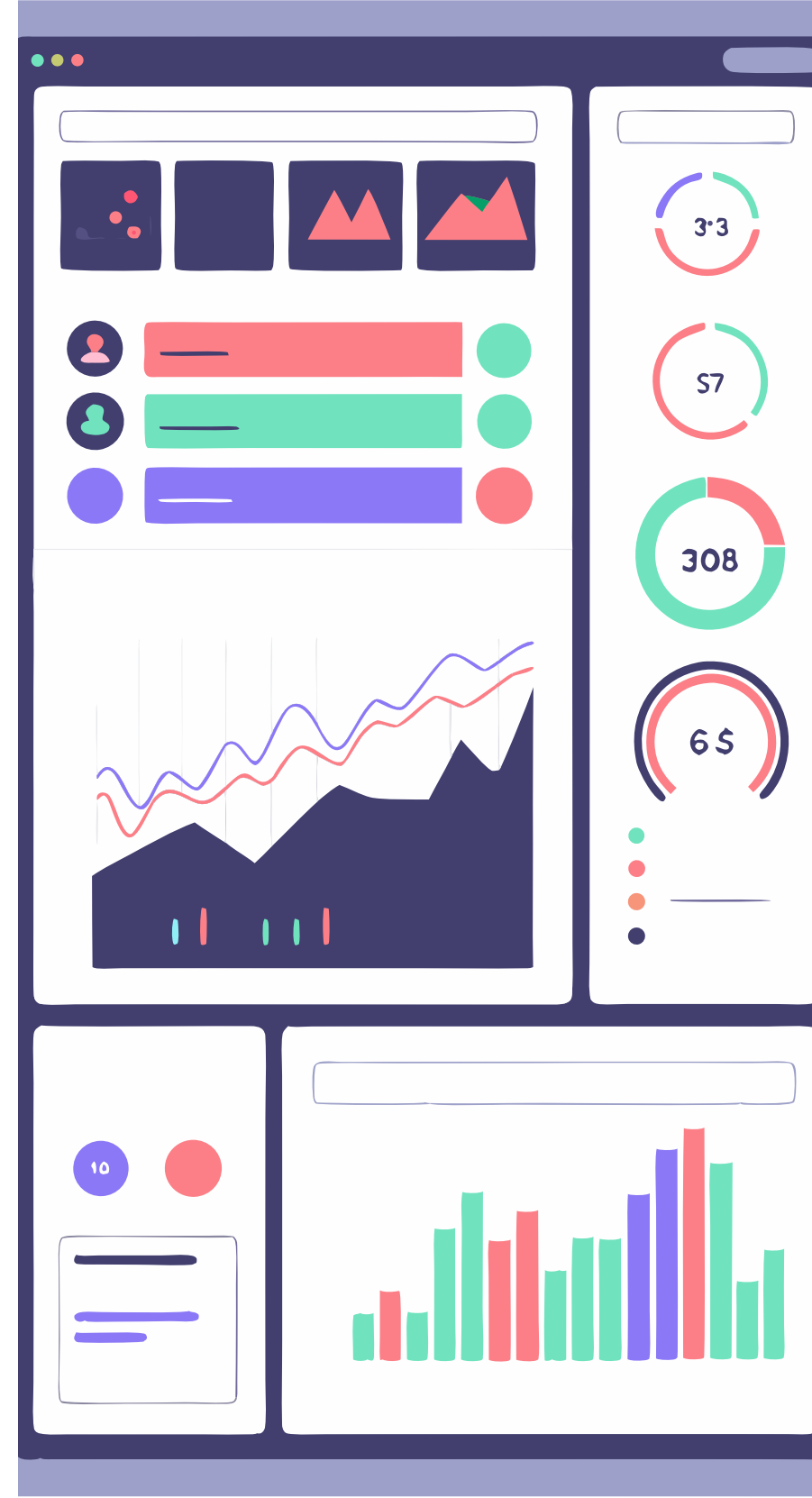
## Customize Design

Apply branding and optimize layout

6

## Share Dashboard

Configure permissions and distribute access





# Troubleshooting Common Issues

## Widget Connection Problems

Widgets not updating automatically indicate broken data links. Verify source sheet permissions and formula references.

- Check widget data source settings
- Refresh browser cache
- Verify sheet sharing permissions

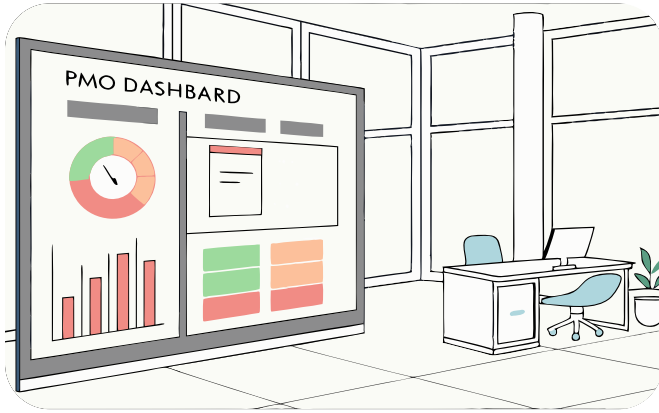
## Missing Data Issues

Incomplete dashboard metrics suggest gaps in underlying sheets. Review data completeness and formula accuracy.

- Validate source data ranges
- Check filter criteria settings
- Review cross-sheet references



# Real-World Use Cases



## PMO Project Tracking

Monitor milestone completion, budget variance, and resource allocation across multiple project portfolios simultaneously.



## Marketing Campaign Metrics

Track campaign performance, lead generation, and conversion rates with automated social media and web analytics integration.



## Operational Excellence

Visualize key performance indicators, quality metrics, and operational efficiency measures for continuous improvement initiatives.



# Contact Scholar Solutions

Ready to transform your workflows and enhance your PMO's effectiveness? Connect with Scholar Solutions to discuss your unique challenges and explore tailored, evidence-based solutions, including expert Smartsheet architecture

1

**Contact**

**[Contact@scholarsolutions.in](mailto:Contact@scholarsolutions.in)**

2

**Connect**

**[LinkedIn](#)**

3

**Schedule**

**[Book a Consultation – Calendly](#)**